

## NEWS

- FXPHD DOP215 effects shoot  
<https://www.fxphd.com/fxphd/courseInfo.php>



## NEWS



## NEWS

- Mike's Film Shoot





## NEWS

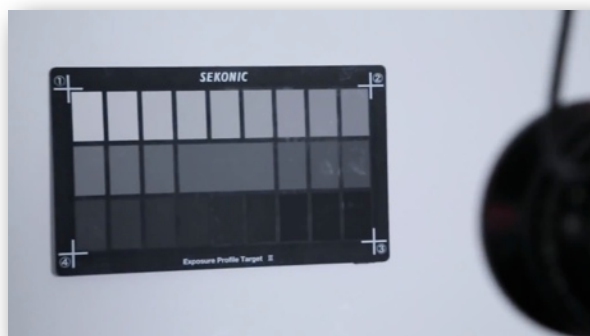
- [Sekonic Light Meter: Sekonic L-478D LiteMaster Pro Exposure Meter - Overview](#) **\$389 Out now**

Sekonic's new LITEMASTER PRO L-478D meter is the world's first touch-screen-operated light meter. It has an array of unique, must-have features for both motion and still story tellers. Its compact size is both instantly familiar and comfortable to use. The large LCD (2.7") displays ambient, flash, cine and a host of other information in a clear and understandable way. Settings are made by simply touching or sliding a finger over the screen.

The L-478D can be quickly calibrated to your camera using Sekonic's Data Transfer software and either Sekonic or X-Rite Brand targets or by manually inputting data to the DTS program or on the meter itself.

[Filmmakers: L-478D Features & Benefits of the Sekonic LITEMASTER PRO Series - YouTube](#)

Use the Sekonic chart, calculates your cameras dynamic range and you can then see that dynamic range



## NEWS

- [Leica Camera AG - Photography - LEICA M](#) first digital Leica with movie mode.  
Price TBA expected to be appx \$7000 release Q1 2013 appx
  - full frame sensor
  - 1080p/ 720p (30fps max)
  - data rate?
  - optical VF with tiltable hot shoe mount EVF
  - AUdio in with man audio levels adjustable in shot
  - focus peaking (in stills or video)

[John Dooley demonstrates The Leica M - YouTube](#)



- [Scarlet Deal of a Lifetime](#) (sold out in 3 days) \$7,100 (vs \$11,900)
  - Battle tested Scarlet X for \$7100
  - 90 day warranty
  - used for a 3 second bullet time shot (presume appx 75 bodies for sale?)



## NEWS

- [HERO3 Cameras | More Powerful in Every Way | Most Advanced GoPro](#) **\$399 Any day now**

Video Resolution	NTSC fps	PAL fps	STD Mode	Protune Mode	Field of View (FOV)	Screen Resolution/ Aspect Ratio
4K	15 fps	12.5 fps	NO	ONLY in Protune	Ultra Wide	3840x2160 16:9
4K Cin	15 fps	12 fps	NO	ONLY in Protune	Ultra Wide	4096x2160 17:9
2.7K	30 fps	25 fps	YES*	YES	Ultra Wide	2704 x 1528 16:9
2.7K Cin	24 fps	24 fps	YES*	YES	Ultra Wide	2704 x 1440 17:9
1080p	60, 48, 30, 24 fps	50, 48, 25, 24 fps	YES	YES	Ultra Wide, Medium, Narrow	1920x1080 16:9
1440p	48, 30, 24 fps	48, 25, 24 fps	YES	YES	Ultra Wide	1920x1440 4:3
960p	100, 48 fps	100, 48 fps	YES	YES	Ultra Wide	1280x960 4:3
720p	120, 60 fps	100, 50 fps	YES	YES	Ultra Wide, Medium, Narrow*	1280x720 16:9
WVGA	240 fps	240 fps	YES	NO	Ultra Wide	848x480 16:9



## NEWS

- Built-in Wi-Fi enables remote control via included Wi-Fi Remote or live video preview and remote control on smartphones and tablets running the free GoPro app.
- Rugged housing is waterproof to 197'/60M and captures sharp images above and below water
- Compatible with LCD Touch BacPac™ and second generation Battery BacPac™
- Backwards compatible with older generation BacPacs™
- New advanced camera settings: Looping video, Continuous Photo, Manual White Balance control, Protune Mode, allows to shoot photos while recording video and more.



- [GoPro LCD Touch BacPac™](#) | Removable LCD touch screen for GoPro Cameras \$79

- Preview + playback photos and videos including instant slow motion playback
- Integrated speaker with volume control
- 3.5 mm headphone jack



## NEWS

- [GoPro App](#)     [GoPro: GoPro App Tutorial - YouTube](#)     \$FREE Avail now

- Video preview
- camera battery meter
- change camera modes & settings, resolution, time lapse intervals etc
- roll cut
- wifi vs rather more sucky bluetooth!
- 





## NEWS

- [matthewduclos.files.wordpress.com/2012/09/zoom-lens-chart2.pdf](http://matthewduclos.files.wordpress.com/2012/09/zoom-lens-chart2.pdf)



## Cine Zoom Lens Range Chart

Generated by Duclos Lenses - 2012



## NEWS

- [Announcement on Motion Picture Film Business of Fujifilm | Fujifilm Global](#)

### Extract:

"Fujifilm has decided to shift its business operations to provide products and services designed for digital workflow of motion picture production and projection.

Digital cinema camera shooting has been gaining momentum, and digital editing that heavily uses CG composition and VFX processing has now become common in motion picture production. There is also an increase in the number of movie theaters that converted to digital projection, following the increase of 3D motion pictures, implying the dramatically advancing digitalization in the motion picture industry. In such trend, Fujifilm has strived to reduce the costs of the production process for its existing negative films and positive films and continued to supply such films. However, the dramatic decrease of demand in the last few years has become far too great a burden to be covered by corporate efforts. Therefore, it has been decided to discontinue the sales of negative films, positive films, and some other products of motion picture in a prospect of March 2013.

Fujifilm will continue to provide films suitable for long-term archiving, high-performance lens for motion pictures, and other products and services designed for digital workflow of motion picture production and exhibition. Fujifilm will strive harder than ever to provide such products and services in its continuous contribution to the motion picture industry.

However, professional and amateur photographic still film will continue to be manufactured"

## GEAR

### • Canon EOS 6D \$2000 Dec 2012

- Full Frame Sensor
- built-in Wi-Fi for remote control and GPS for geotagging info in EXIF
- 1080: 30p (29.97) / 24p (23.976) / 25p, 720: 60p (59.94) / 50p, 480: 30p (29.97) / 25p) with 4 GB automatic file partitioning (continuous recording time: 29 minutes, 59 seconds), selectable "All i-frame" (UHS-I Card is required) or IPB compressions, embedded timecode, and manual audio level control.
- no headphone out
- SD card only
- control all major cam functions via smart phone
- live view preview
- touch focus
- image review & transfer



### Live View Remote



**You can take photos just by checking your smartphone screen using Live View Remote function.**

- (a) [Return to Top Menu] button
- (b) Image information display ON/OFF button
- (c) [Lock Rotation] button
- (d) [Start/End Live View] button
- (e) Blue frame: AF frame
- (f) White frame: Expanded frame
- (g) [Expand/Shrink Display Area] button
- (h) [Display Photographed Image Thumbnails] button
- (i) [Focus (half-press shutter)] button
- (j) [Remote Release] button
- (k) Shooting Settings button

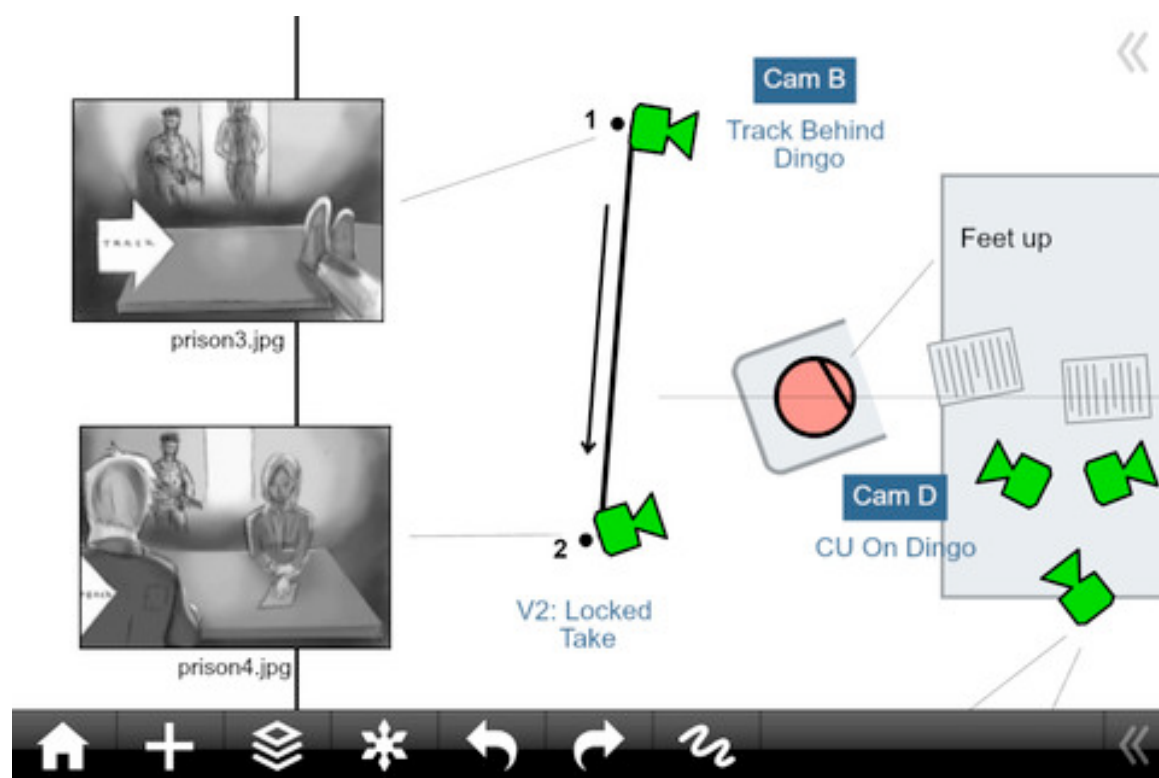
## NEWS

- [Hollywood Camera Work - Shot Designer - Shot Designer](#) for iPhone / iPad  
\$free (\$20 paid functionality upgrade)

### A Camera Diagram That Makes Itself

Shot Designer dramatically speeds up the Director's process of making camera diagrams. Shot Designer is FAST. The app knows how Directing works and does most of the work for you -- like automatically moving cameras when you move characters. Shot Designer is fast enough that you can use it with even with actors waiting!

### [Hollywood Camera Work - Shot Designer - Shot Designer Tutorials](#)





## Twitter / Podcast

- [David Newman \(David Newman\) on](#)



- [CineForm Insider](#)